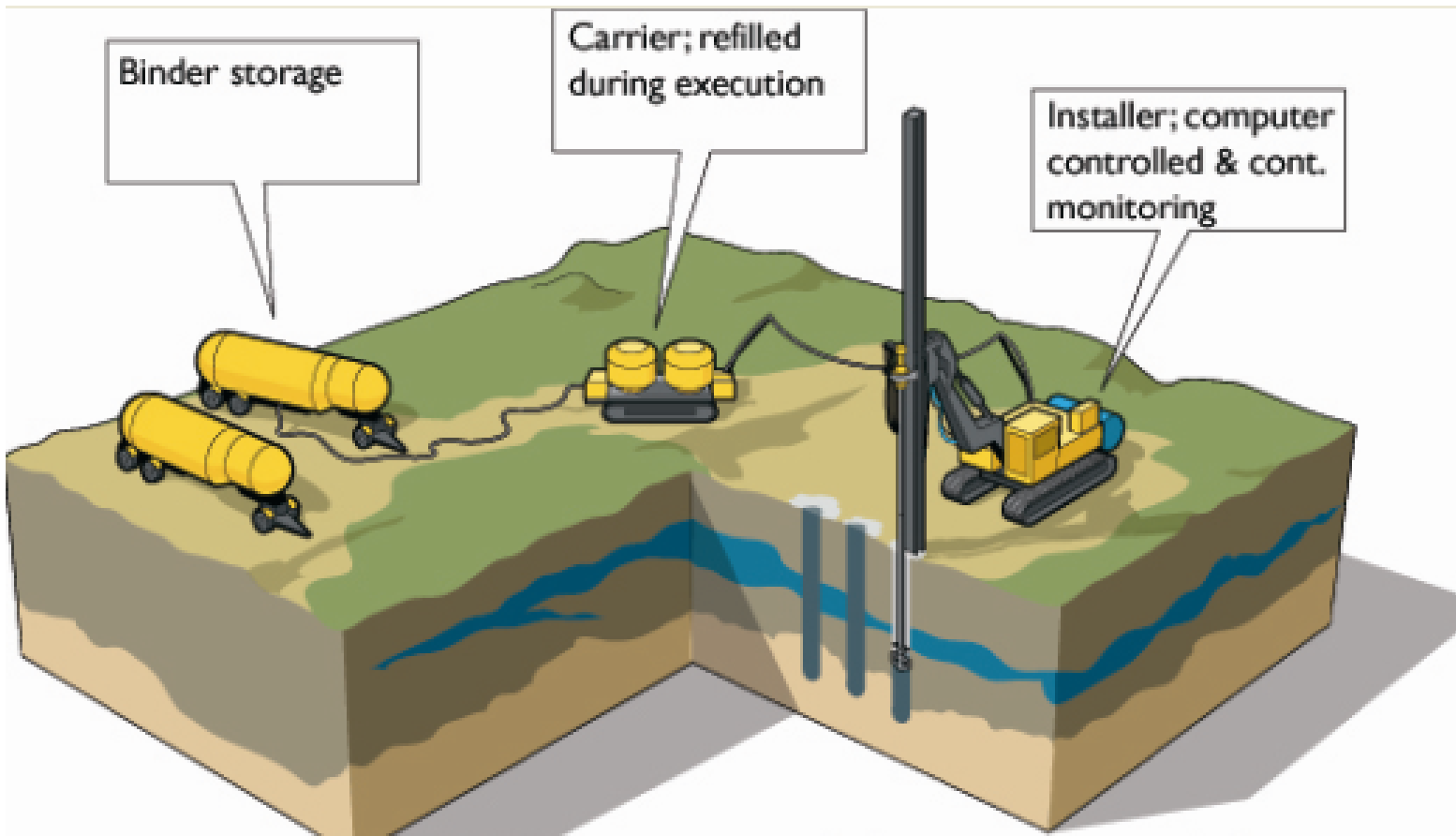




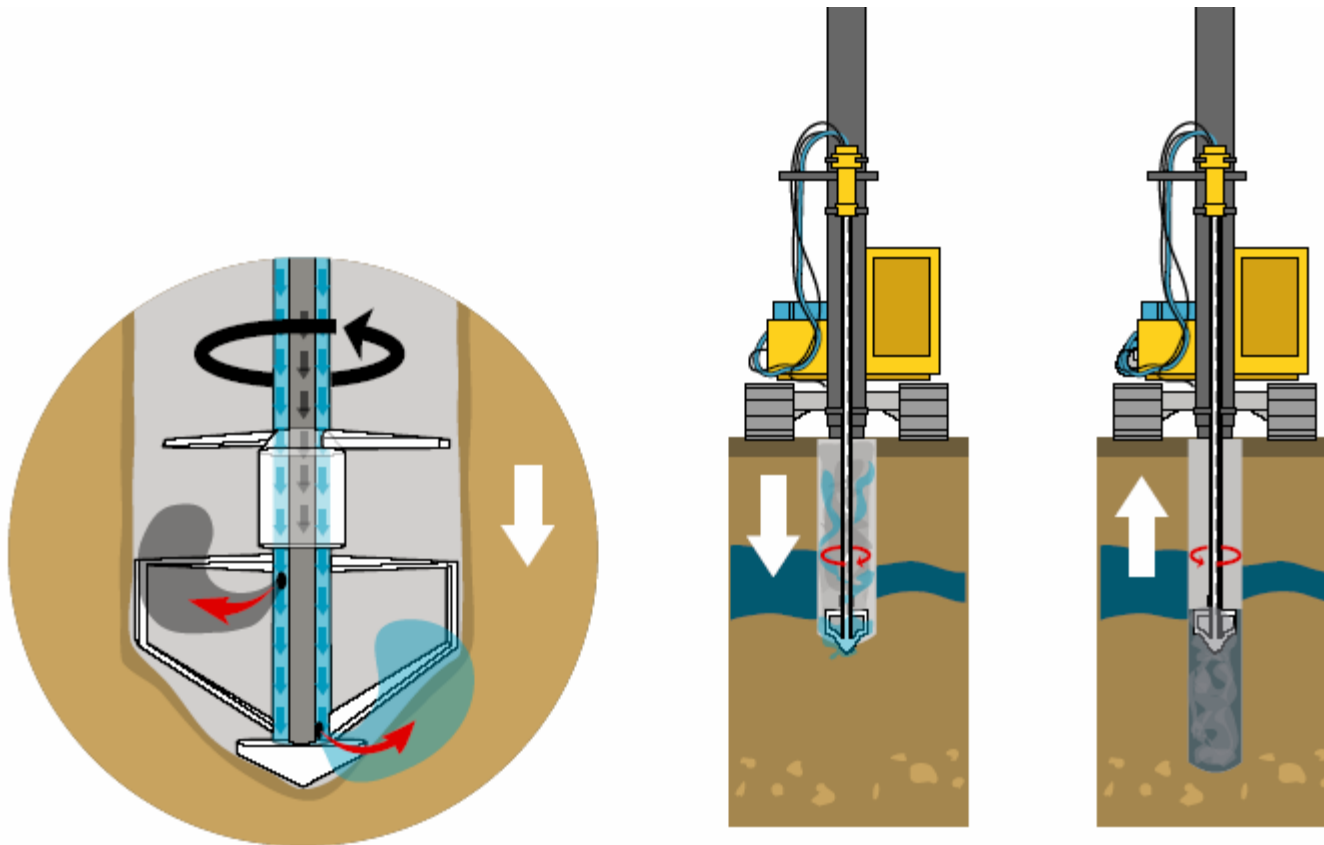
# MDM

A competitive member of  
the deep mixing family

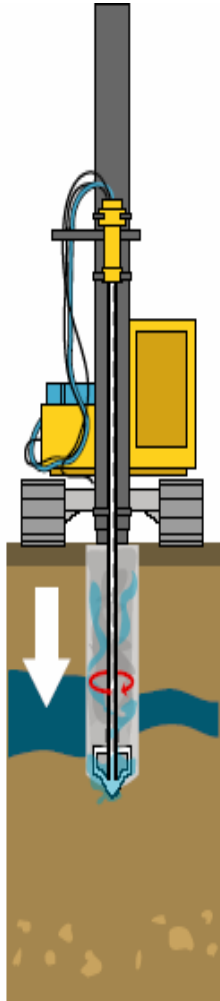
# Site logistics



# Execution principles

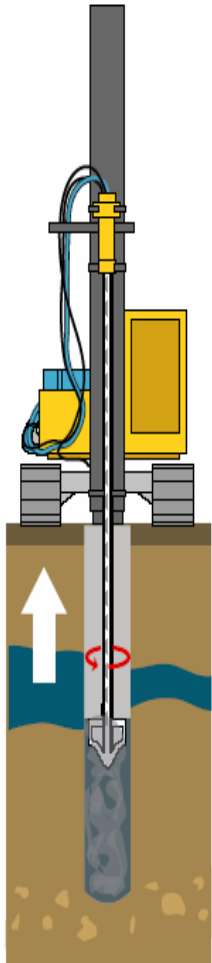


## During penetration



- Injection of
  - Water & binder
- Improved
  - mixing capabilities
  - penetration capabilities
  - homogeneity
- Computer controlled
  - Binder injection
  - water flow/pressure
  - 3 zone program

## During withdrawal



- Injection of
  - Binder & (if needed) water
- Improved
  - Strength & stiffness
  - homogeneity
- Computer controlled
  - Binder injection
  - water flow/pressure
  - 3 zone program

# Deep Mixing Equipment

Wet Mixing

MDM

Dry Mixing



# Why adding water? Why MDM?

- + Insufficient water content
- + Penetration of stiff soils
- + Varying soil layers (dry/wet & stiff/soft)
- + Improved homogeneity
- + Avoid craters in dry crust
- + Reduced air pressure
- Increased water/cement ratio